

Back Panel Installation Instructions

NOTE: TO PREVENT DAMAGE DURING INSTALLATION, DO NOT REMOVE PROTECTIVE FILM FROM COVER UNTIL INSTALLATION IS COMPLETE. RETURNS CANNOT BE ACCEPTED ONCE PROTECTIVE FILM HAS BEEN REMOVED.

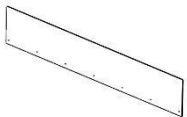
Included in kit:



Cover assembly



1/4"-20 x 0.375"
Philips panhead screws



Back Panel

What you will need:

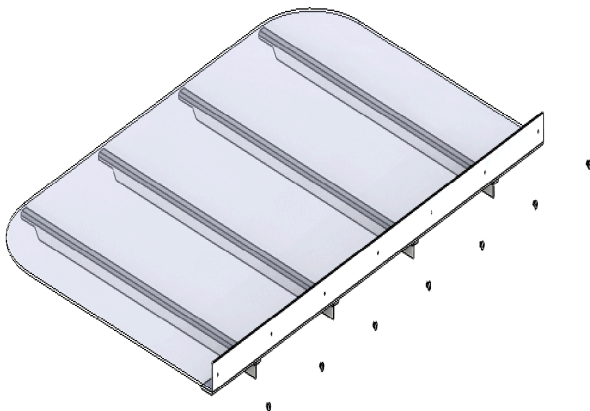
Philips Screwdriver



Installation:

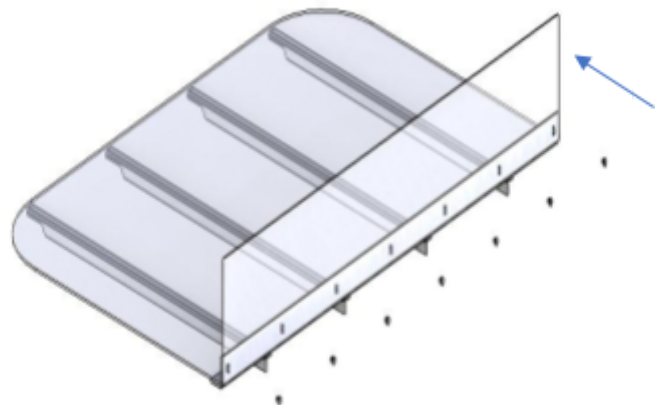
STEP 1:

Remove all 1/4"-20 x 0.375" screws from back bar and set aside.



STEP 2:

Align slots in back panel with holes in back bar and secure with screws from STEP 1.



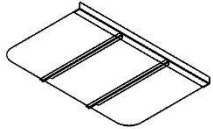
For questions, please call Window Well Supply Customer Service Monday through Friday, 8:00AM – 5:00PM CST at (262) 633-3707.

Cover Hinge Installation

Instructions

NOTE: TO PREVENT DAMAGE DURING INSTALLATION, DO NOT REMOVE PROTECTIVE FILM FROM COVER UNTIL INSTALLATION IS COMPLETE. RETURNS CANNOT BE ACCEPTED ONCE PROTECTIVE FILM HAS BEEN REMOVED.

Included in kit:



Cover assembly with hinge

Drill with 9/64" bit

Marking Pen

What you will need:

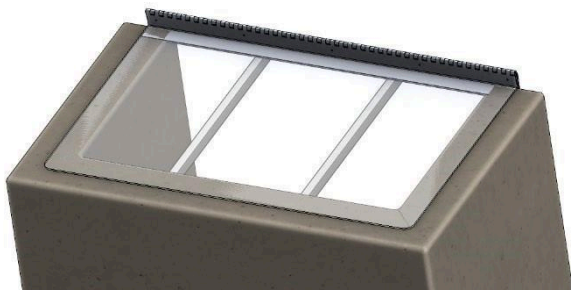


#10-24 Fastening Screws*

*Fastening screws are supplied by customer and should be appropriate for material being fastened to (brick, plastic, metal, concrete, etc.). Use a minimum screw length of $1\frac{3}{4}$ " to ensure proper engagement.

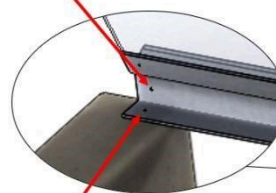
Installation:

STEP 1: Center cover on window well.

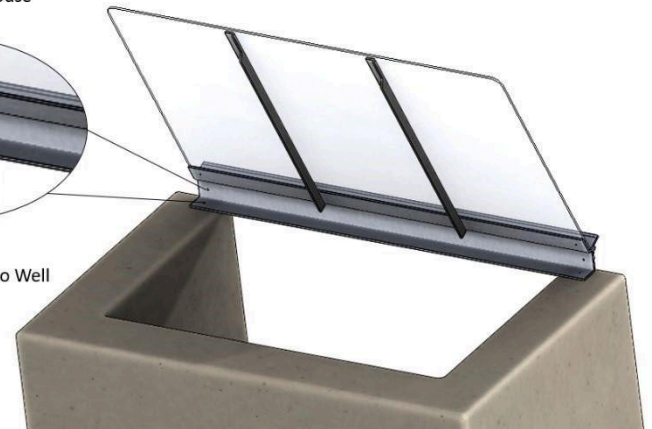


STEP 2: Open cover to expose mount holes on hinge. Using the marking pen, mark desired hole locations on left and right side of hinge.

Top Hole to mount to house



Bottom Hole to mount to Well



The hinge may be mounted to either the house/building OR the window well – it is not necessary to mount to both. The top set of two holes may be used to mount the hinge to the house/building, the bottom set of two holes can be used to mount hinge to the window well.

STEP 3: Remove cover from well and drill 9/64" pilot holes in marked hole locations.

STEP 4: Re-set cover on well and align the holes in the hinge with the drilled pilot holes.

STEP 5: Using the appropriate customer-supplied #10-24 screws, fasten the hinge to the house/building OR to the window well.

You can now refer to the Window Well Cover Installation Instruction Sheet provided with your cover to complete the installation of your window well cover.

Cover Locks Installation Instructions

Included in kit:



Clevis Pins



Cotter Pins

Lock Brackets Drill with 9/64" bit and



3/16" bit

Marking



Pen

#10

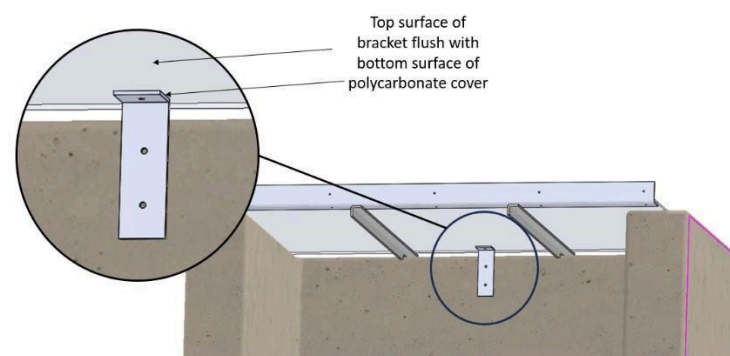


Fastening Screws*
(2 per lock)

*Fastening screws are supplied by customer and should be appropriate for material being fastened to (brick, plastic, metal, concrete, etc.). Use a minimum screw length of 1³/₄" to ensure proper engagement.

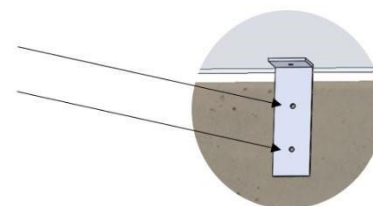
Installation:

STEP 1: From inside the window well, align the Lock

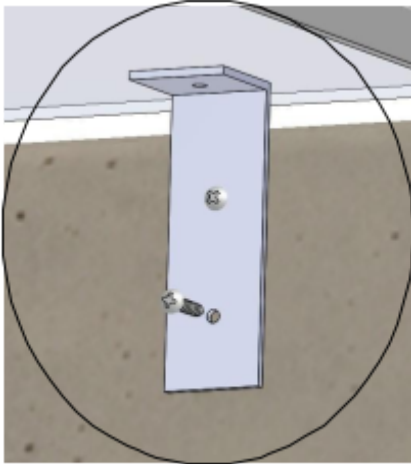


STEP 2: Use the marking pen to mark two Bracket so that the top of the bracket is flush with the

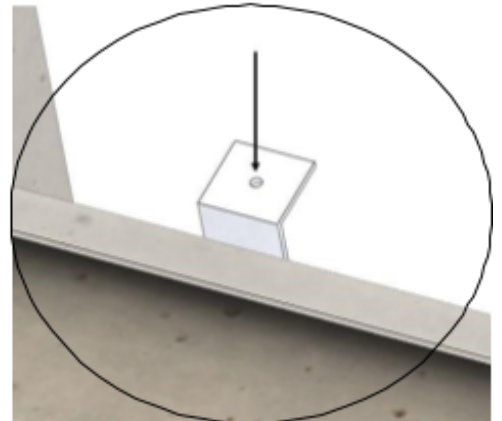
bracket
hole
locations
on well.
bottom
surface
of the
polycarbonate cover.



STEP 3: Use a 9/64" drill bit to drill two pilot locations. Fasten the Lock into the polycarbonate cover that aligns with the Bracket to the well using appropriate #10-24

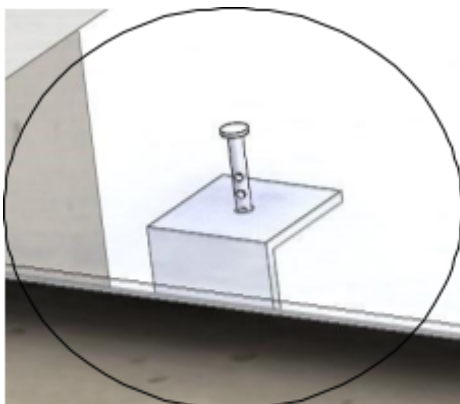


STEP 4: From top side of cover, drill a 3/16" hole holes in marked locations. Fasten the Lock Bracket screws.

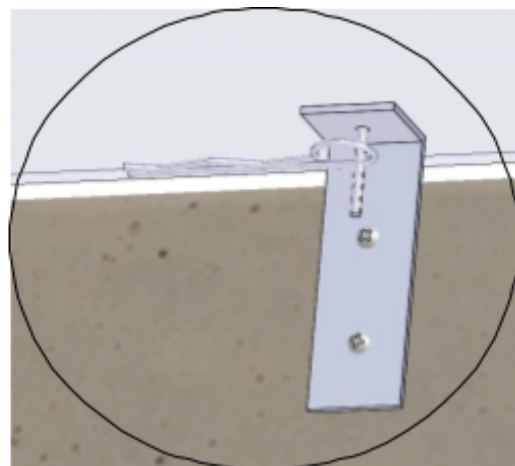


Cover Locks Installation Instructions (Continued)

STEP 5: Insert clevis pin through top side of Bracket.



STEP 6: From inside the window well, insert cover, into the Lock cotter pin through clevis pin to secure lock.



STEP 7: Repeat steps 1-6 with the remaining locks. Be sure to use all locks provided and space them evenly. This will ensure that the polycarbonate cover cannot be flexed enough to allow access to the lock from outside of the cover.

For questions, please call Window Well Supply Customer Service
Monday through Friday, 8:00AM – 5:00PM CST at (262) 633-3707.