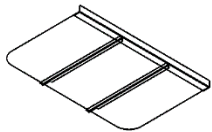


## Window Well Cover Installation Instructions

For concrete/brick, wood/timber and composite wells

**NOTE:** TO PREVENT DAMAGE DURING INSTALLATION, DO NOT REMOVE PROTECTIVE FILM FROM COVER UNTIL INSTALLATION IS COMPLETE. RETURNS CANNOT BE ACCEPTED ONCE PROTECTIVE FILM HAS BEEN REMOVED.

### Included in kit:



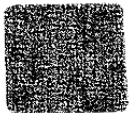
Cover assembly



#8 x 0.75"  
Philips panhead screws



Hook & loop discs



Hook & loop squares



Masonry Anchors

### What you will need:



Drill with 3/16" bit



Phillips screwdriver



Permanent Marker

### For concrete/brick wells you will also need:



3/16" Masonry drill bit



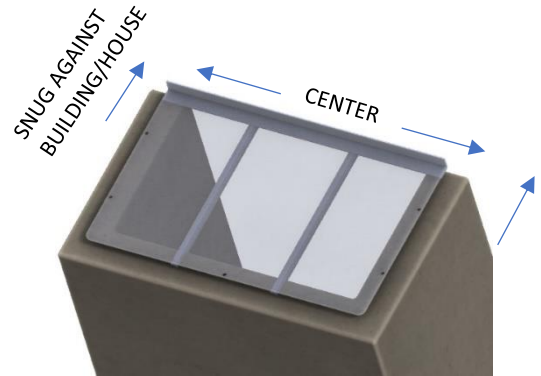
Hammer

**NOTE:** IN COOLER CLIMATE CONDITIONS, HOOK & LOOP ADHESIVE AND WELL COVER SHOULD BE BROUGHT TO ROOM TEMPERATURE (ABOVE 67°F) FOR A MINIMUM OF 1 HOUR BEFORE APPLICATION IN ORDER TO ACHIEVE A SECURE BOND.

**Installation:**

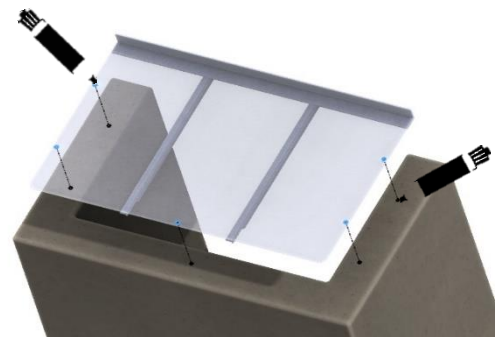
**STEP 1:**

Position cover assembly over window well. Ensure that the cover assembly is centered on the window well and that the back of the assembly is snug against the house/building.



**STEP 2:**

Lift cover slightly from well and make a locating mark on the well for each corresponding hook & loop locating mark on the cover film (*approximate* hook & loop locations have been indicated on the protective film of the cover). Replace cover on well and trace locating marks made on well to protective film on top side of cover to match exact desired locations of hook & loop.



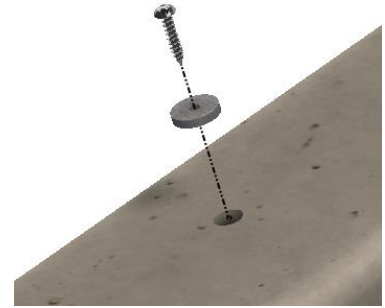
**STEP 3:**

Remove cover from well and set aside. For concrete and brick wells, use a drill with 3/16" masonry bit to drill holes in the well at each locating mark made in STEP 2 to a depth of 1½"; use a hammer to tap in the anchors provided. For other well types a standard 3/16" bit may be used; anchors are not needed.



**STEP 4:**

At each hole location, attach a hook & loop disc to the concrete well using the #8-32 x 0.375" Phillips pan head screws provided.



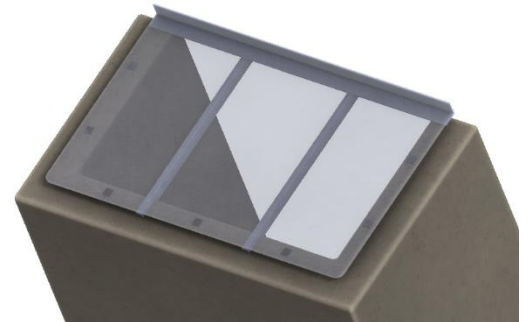
**STEP 5:**

Remove backing from hook and loop square, align square with locating mark on top side of cover and secure it to bottom side of cover using firm, even pressure. Repeat for each locating mark.



**STEP 6:**

Align cover-side hook and loop to well-side hook and loop and secure cover to well by applying firm pressure at each hook and loop location. Carefully remove protective film from top side of cover and discard. *Protective film must be removed shortly after installation to prevent permanent adhesion to cover.*



**NOTE:** IN COOLER CLIMATE CONDITIONS, ADHESIVE SHOULD BE ALLOWED TO CURE AT ROOM TEMPERATURE (ABOVE 67°F) FOR A MINIMUM OF 1 HOUR BEFORE ATTEMPTING TO DISENGAGE THE HOOK AND LOOP MATE. PREMATURE DISENGAGEMENT MAY CAUSE A WEAKENED ADHESION BOND OR BOND FAILURE.

*Your window well cover installation is now complete!*

For questions, please call Window Well Supply Customer Service  
Monday through Friday, 8:00AM – 5:00PM CST at (262) 633-3707.