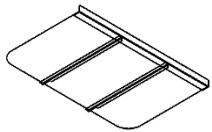


Window Well Cover Installation Instructions

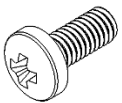
Flat and sloped covers for metal wells

NOTE: TO PREVENT DAMAGE DURING INSTALLATION, DO NOT REMOVE PROTECTIVE FILM FROM COVER UNTIL INSTALLATION IS COMPLETE. RETURNS CANNOT BE ACCEPTED ONCE PROTECTIVE FILM HAS BEEN REMOVED.

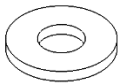
Included in kit:



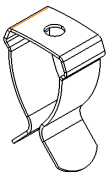
Cover assembly



#8-32 x 1/2"
Phillips panhead screws



#8 flat washers



Well clips



#8 nylon lock nuts

What you will need:



Drill with 3/16" bit



Phillips screwdriver

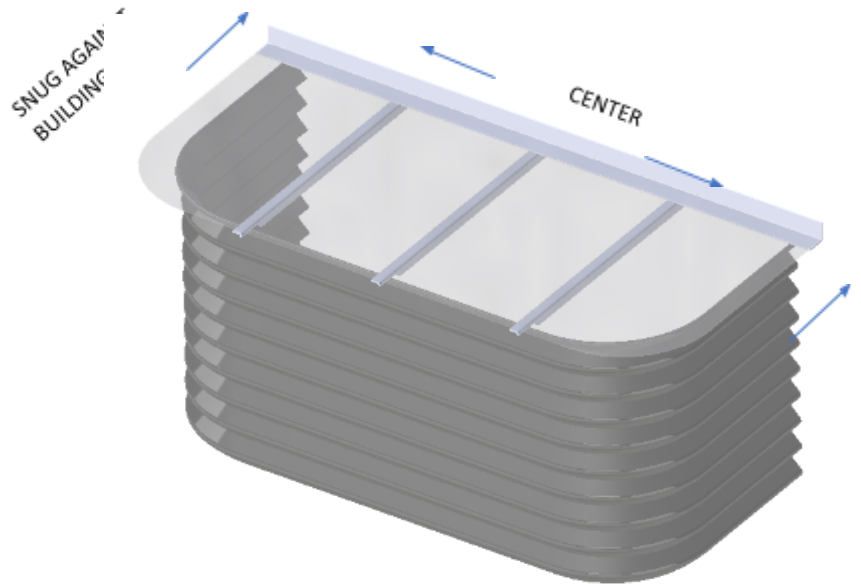


Permanent Marker

Installation:

STEP 1:

Position cover assembly over window well.
Ensure that the cover assembly is centered on the window well and that the back of the assembly is snug against the house/building.

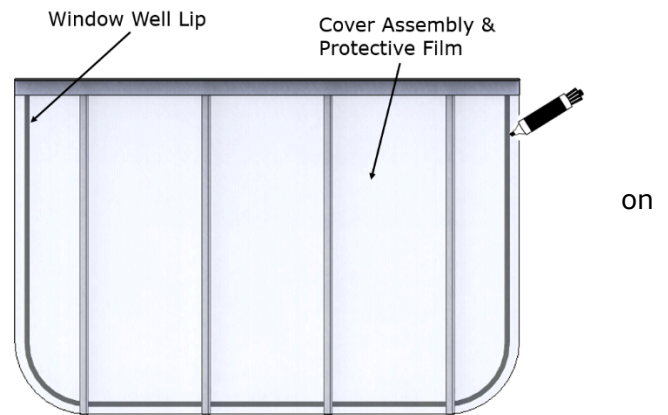


NOTE BEFORE DRILLING HOLES:

Please count the number of clips provided with your cover and drill only enough holes for the number of clips provided.

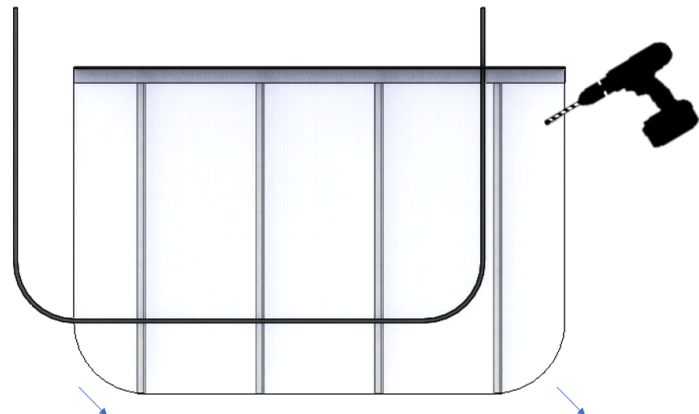
STEP 2:

Using a permanent marker, mark on the protective film to locate the center of the window well lip at each clip location. Approximate clip locations have been indicated each cover.



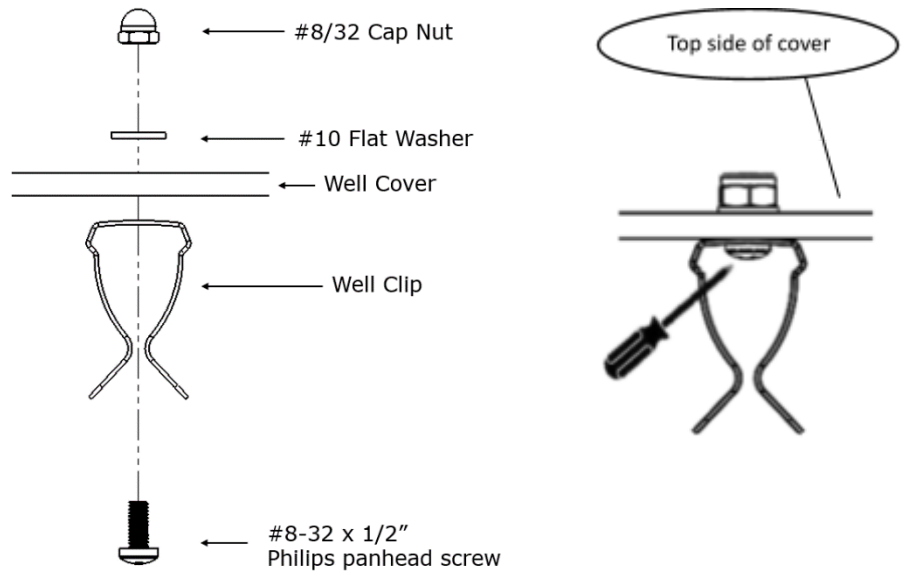
STEP 3:

Shift the cover slightly from its current position in order to drill holes. Drill a 3/16" hole at each marker location made in STEP 1.



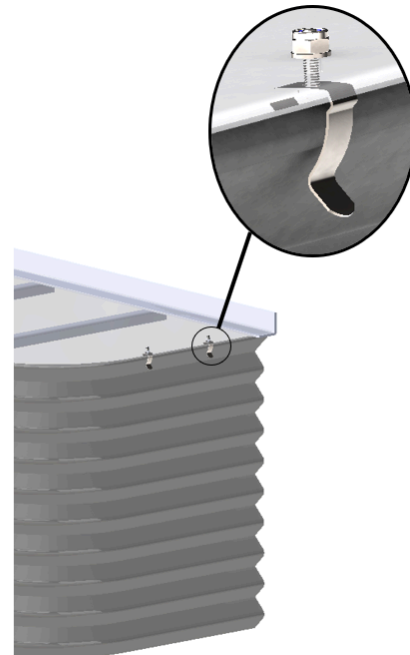
STEP 4:

At each hole location, insert a #8-32 x 1/2" Phillips pan head screw through the bottom side of well clip and up through the bottom side of cover assembly. Secure with a lock nut and flat washer on top side of cover. Use a Philips screw driver to tighten.



STEP 5:

Attach cover assembly to window well by snapping the clips onto the lip of the window well. Remove protective film and discard.



Your window well cover installation is now complete!

For questions, please call Window Well Supply Customer Service Monday through Friday, 8:00AM – 5:00PM CST at (262) 633-3707.