








Cover Locks Installation Instructions

Included in kit:

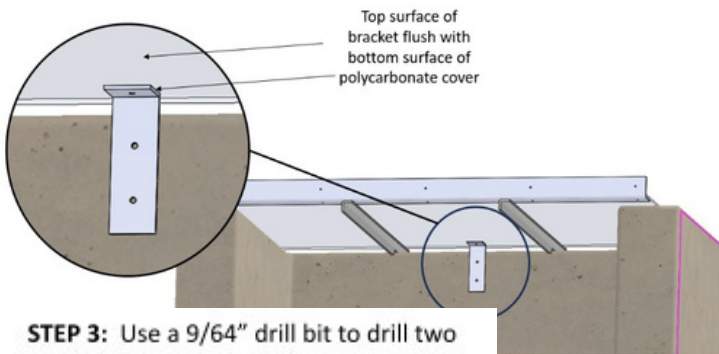
-  Lock Brackets
-  Clevis Pins
-  Cotter Pins
-  Masonry Anchors
-  #10 Fastening Screws* (2 per lock)

What you will need:

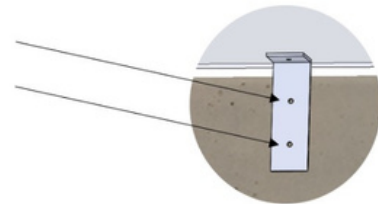
-  Drill with 9/64" bit and 3/16" bit
-  Marking Pen

Installation:

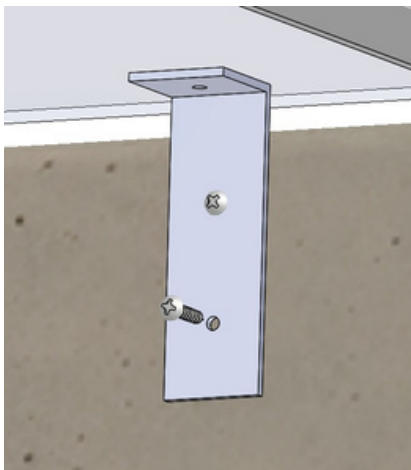
STEP 1: From inside the window well, align the Lock Bracket so that the top of the bracket is flush with the bottom surface of the polycarbonate cover.



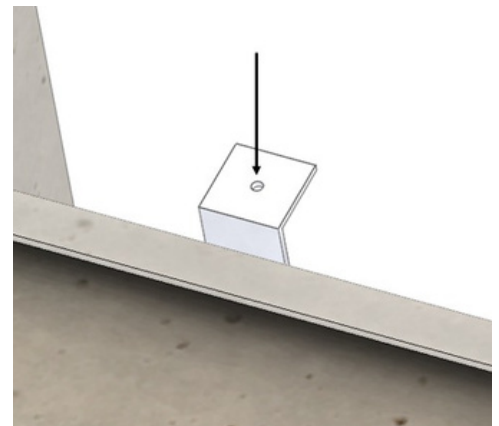
STEP 2: Use the marking pen to mark two bracket hole locations on well.



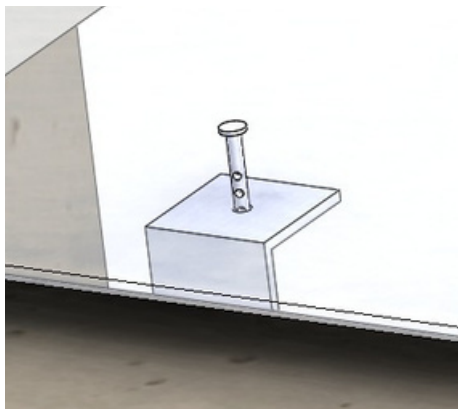
STEP 3: Use a 9/64" drill bit to drill two pilot holes in marked locations. Fasten the Lock Bracket to the well using appropriate #10-24 screws.



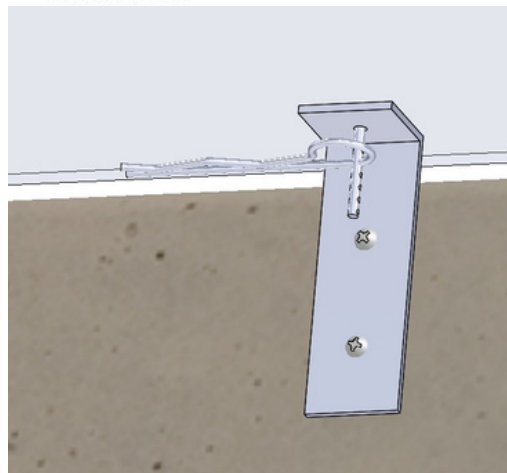
STEP 4: From top side of cover, drill a 3/16" hole into the polycarbonate cover that aligns with the top hole in the Lock Bracket



STEP 5: Insert clevis pin through top side of cover, into the Lock Bracket.



STEP 6: From inside the window well, insert cotter pin through clevis pin to secure lock.



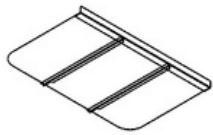
STEP 7: Repeat steps 1-6 with the remaining locks. Be sure to use all locks provided and space them evenly. This will ensure that the polycarbonate cover cannot be flexed enough to allow access to the lock from outside of the cover.

For questions, please call Window Well Supply Customer Service Monday through Friday, 8:00AM – 5:00PM CST at (262) 633-3707.

Cover Hinge Installation Instructions

NOTE: TO PREVENT DAMAGE DURING INSTALLATION, DO NOT REMOVE PROTECTIVE FILM FROM COVER UNTIL INSTALLATION IS COMPLETE. RETURNS CANNOT BE ACCEPTED ONCE PROTECTIVE FILM HAS BEEN REMOVED.

Included in kit:



Cover assembly with hinge

What you will need:



Drill with 9/64" bit



Marking Pen

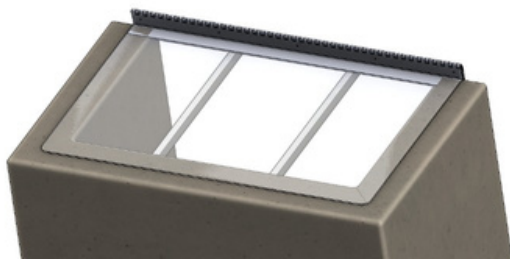


#10-24 Fastening Screws*

*Fastening screws are supplied by customer and should be appropriate for material being fastened to (brick, plastic, metal, concrete, etc.). Use a minimum screw length of 13/4" to ensure proper engagement.

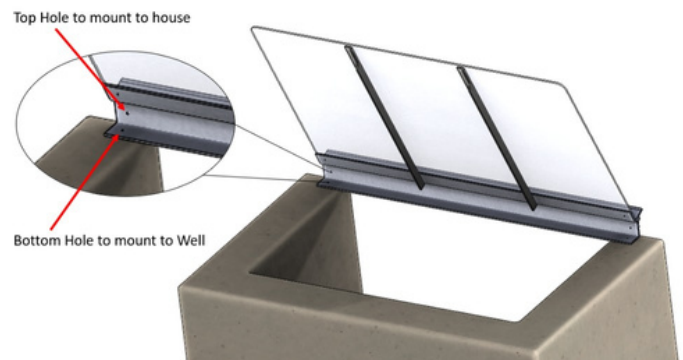
Installation:

STEP 1: Center cover on window well.



The hinge may be mounted to either the house/building OR the window well – it is not necessary to mount to both. The top set of two holes may be used to mount the hinge to the house/building, the bottom set of two holes can be used to mount hinge to the window well.

STEP 2: Open cover to expose mount holes on hinge. Using the marking pen, mark desired hole locations on left and right side of hinge.



STEP 3: Remove cover from well and drill 9/64" pilot holes in marked hole locations.

STEP 4: Re-set cover on well and align the holes in the hinge with the drilled pilot holes.

STEP 5: Using the appropriate customer-supplied #10-24 screws, fasten the hinge to the house/building OR to the window well.

You can now refer to the Window Well Cover Installation Instruction Sheet provided with your cover to complete the installation of your window well cover.